



INDIA INDUSTRIES

IATF 16949 : 2016 Certified Company

No:250 A,1st Cross Main Road,

Sidco Industrial Estate,

Chennai-600098.

Tamilnadu.

India.

Mobile – 9962287307 – Mr.S.Shanmugam – Managing Partner

Mobile – 9381046831 – Mr.B.Rajendran – Partner

GST NO : 33AAAFI0219D1Z8

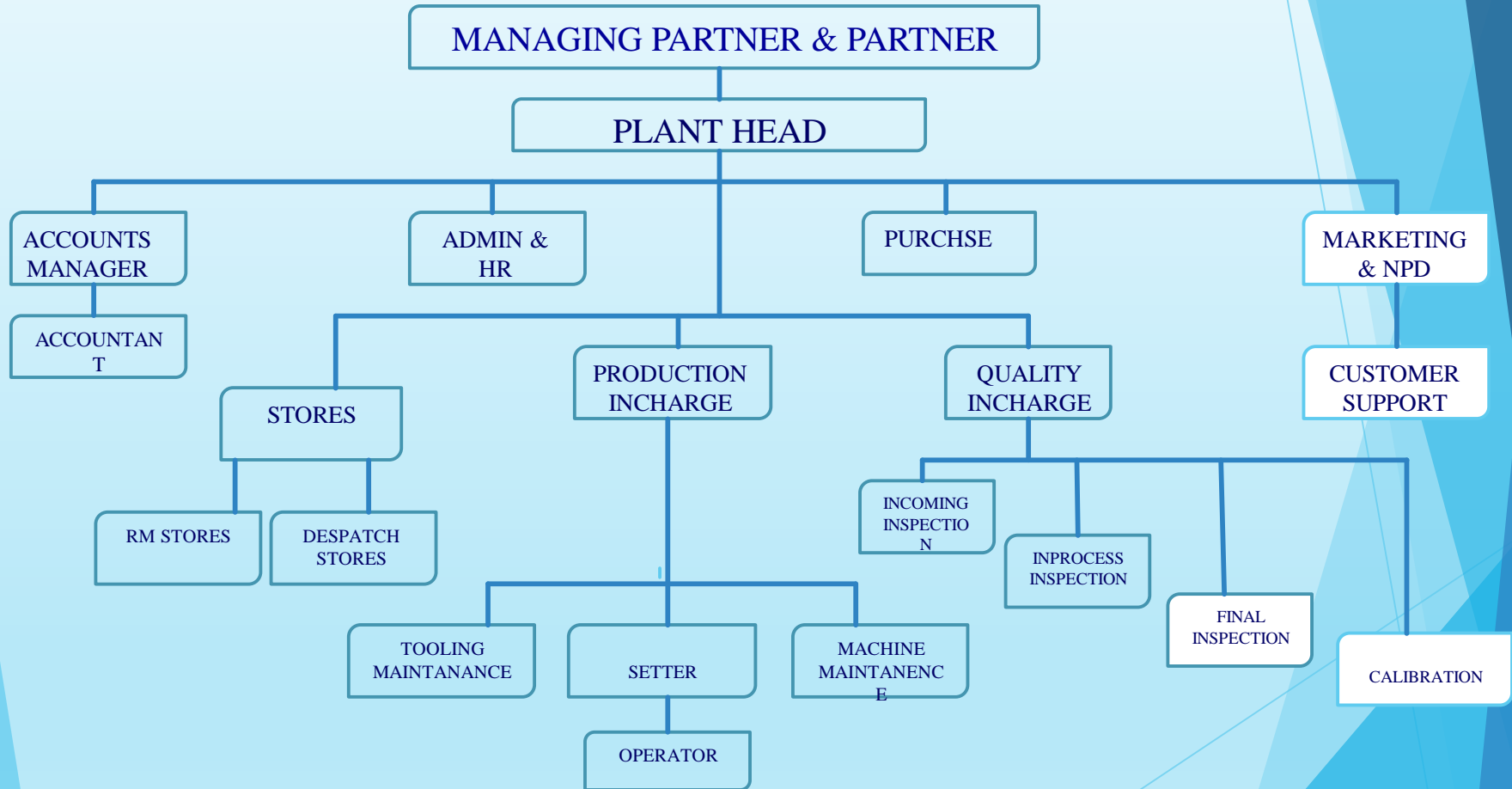
Mail : indiaindustries@yahoo.co.in

www.indiaindustries.co.in

COMPANY PROFILE

Established in	:	1985
Sales	:	Rs15 Crores per annum
Employees	:	90 People
Products	:	Machining Components & General Engineering
Average Customer PPM	:	10 PPM
Certifications	:	IATF 16949 : 2016
Segments	:	Brakes Assy Parts, Light Engine Parts , Construction Equipment Parts, and Fasteners

ORGANIZATION CHART



INDIA INDUSTRIES



PLANT I:

PLOT 250A, North Phase, 1st Cross Main Road, SIDCO Industrial Estate, Ambattur, Chennai – 600 098.

PLANT II:

Precise Mechanical Works Unit - II
No: 230, 9th Street SIDCO Industrial Estate, Ambattur, Chennai – 600098.

OUR ESTEEMED CUSTOMERS



Brakes India Private Limited



Sundram Fasteners Limited



GREAVES
SINCE 1859

Greaves Cotton Limited



SCHWING
Stetter



SUPER AUTO FORGE
Forging ahead into future since 1975



QUALITY POLICY

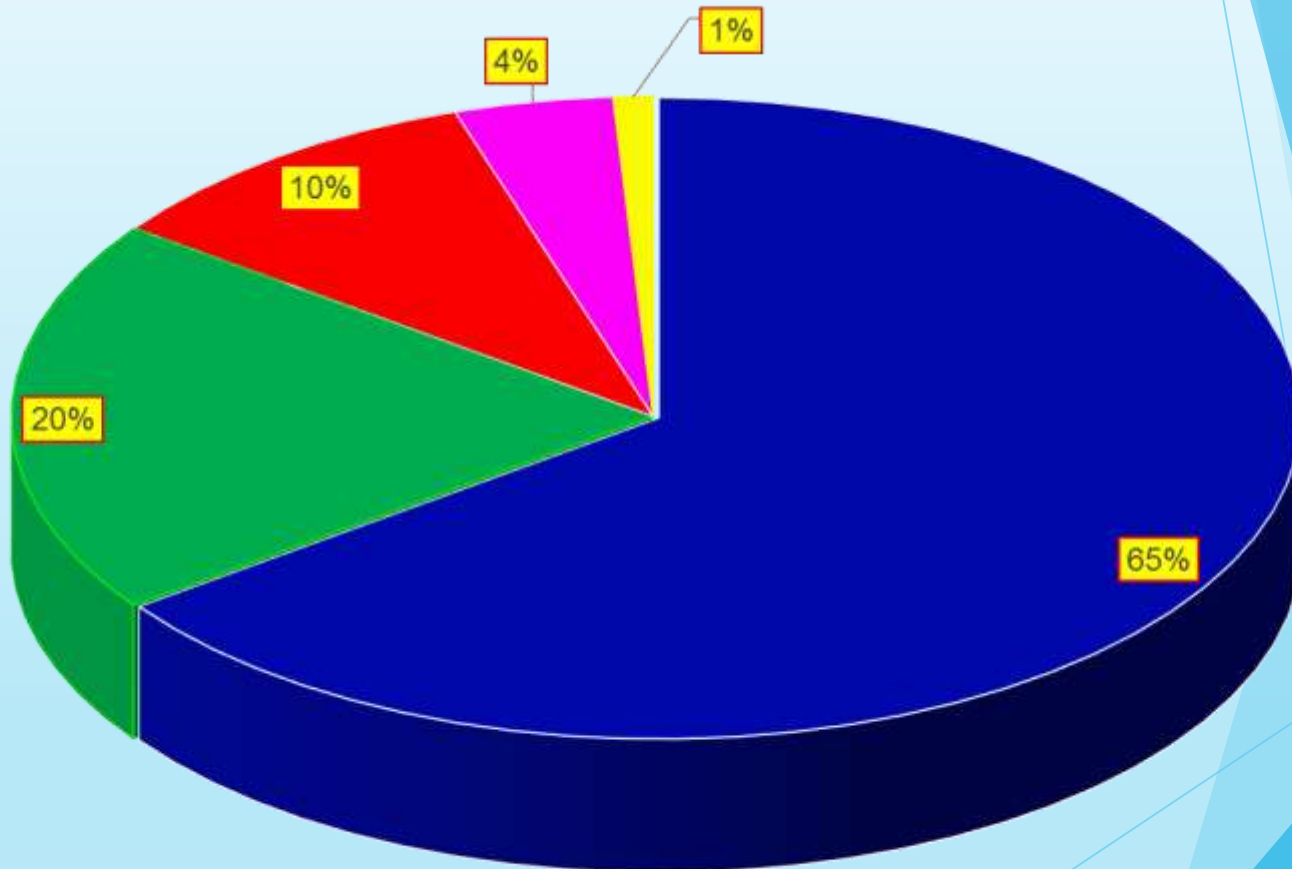
OUR QUALITY POLICY IS TO ACHIEVE

- ❑ Customer Satisfaction.
- ❑ Provide Value for Money.
- ❑ Be a Reliable Vendor.

THROUGH

- ❑ Timely Delivery.
- ❑ Continual Improvement.
- ❑ Appropriate Technology.
- ❑ Trained Work Force.
- ❑ Total Quality Approach.

SALES BY MARKET SECTOR



■ Brakes System Components
■ Fasteners

■ Construction Equipment's
■ Light Engine Parts

PRODUCT PROFILE

S Cam Child parts



GREAVES COTTON
Other Customers



Tractor Brake Child parts



BRAKES INDIA PARTS

COMPONENTS



SCHWING STETTER PARTS



FACILITIES

❖ VMC MACHINE	-	3
❖ CNC MACHINE	-	18
❖ POLYGON TURNING MILLING	-	2
❖ CENTERLESS GRINDING	-	2
❖ THREAD ROLLING	-	4
❖ SURFACE GRINDING	-	2
❖ SINGLE SPINDLE AUTO	-	14
❖ DRILLING MACHINE	-	18
❖ BUNDLE CUTTING M/C	-	2
❖ TAPPING MACHINE M8	-	3
❖ LATHE	-	4
❖ CIRCULAR CUTTING MACHINE	-	1 ⁰

INFRASTRUCTURE



VMC LINE

CNC LINE



M/C SHOP TRAUB, GRINDING & THREAD ROLLING



M/C SHOP DRILLING OPERATION (FIRST FLOOR)



INFRASTRUCTURE



Centerless
Grinding

Surface Grinding
Machine



INFRASTRUCTURE



Raw material
Store

Thread Rolling
Machine



GENERATOR



POWER CAPACITY – 125 KVA



POWER CAPACITY – 58.3 KVA

MEASURING INSTRUMENTS

- ❖ PROFILE PROJECTOR
- ❖ SURFACE ROUGHNESS TESTER
- ❖ CONTOUR GRAPH
- ❖ HEIGHT GAUGE (DIGITAL)
- ❖ AIR GAUGE
- ❖ ROCKWELL HARDNESS TESTER
- ❖ DIGITAL VERNIER CALIPER
- ❖ DIGITAL MICROMETER
- ❖ PLUNGER DIAL GAUGE
- ❖ LEVER DIAL GAUGE
- ❖ BORE DIAL GAUGE
- ❖ COATING THICKNESS METER

MEASURING INSTRUMENTS



MEASURING INSTRUMENTS

Profile Projector



Rockwell Hardness Tester



Contour Graph



FINAL INSPECTION AND 100% VISUAL INSPECTION



Final Inspection area

Routine activity

- Daily red bin analysis.
- Internal review meeting (weekly 3 times).
- Rejection awareness meeting .
- Creating awareness about 5's.



QUALITY SYSTEM

- ❖ IATF 16949: 2016 QUALITY MANAGEMENT SYSTEM

CUSTOMER APPRECIATION

- ❖ BEST SUPPLIER AWARD IN 2012 FROM SUNDARAM FASTENERS
- ❖ BEST SUPPLIER AWARD IN 2013 FROM BRAKES INDIA
- ❖ BEST QUALITY AWARD IN 2014 FROM GREAVE COTTON
- ❖ BEST PERFORMANCE AWARD IN 2015 FROM GREAVE COTTON
- ❖ BEST PERFORMANCE AWARD IN 2017 FROM BRAKES INDIA

CERTIFICATIONS



AWARDS



AWARDS



